

D200 Firmware Upgrade Procedure

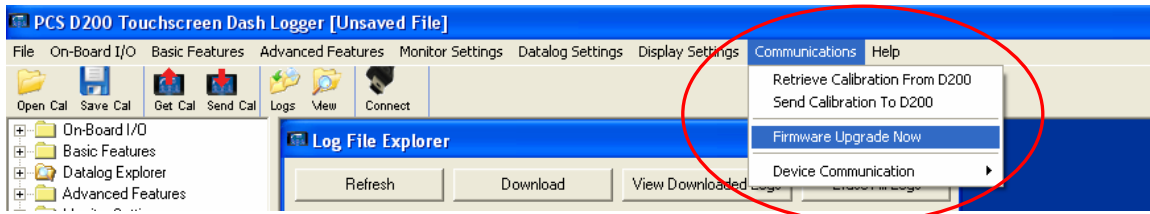


The D200 software must be installed on the computer to perform a firmware upgrade. If you are upgrading to newer software and firmware, install the new software first then perform the firmware upgrade procedure.

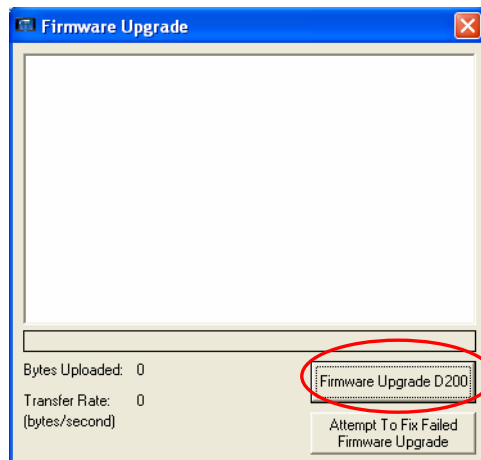
1. Turn on power to the D200.
2. Connect the D200 to the computer using the USB cable.
3. Open the D200 software.
4. Click Yes when it asks if you want to open a calibration.



5. From the top tool bar, select communications then Firmware Upgrade Now.



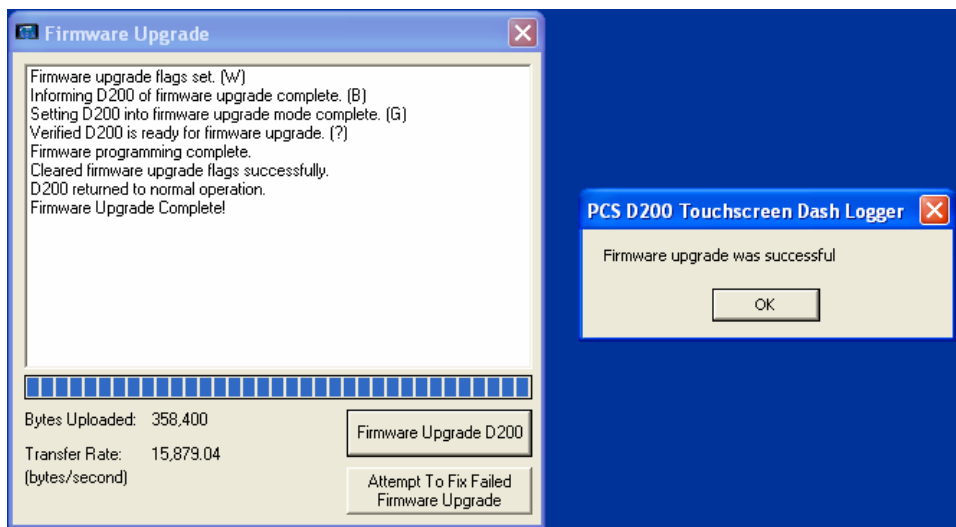
6. Select Firmware Upgrade D200 from the new window that opens.



D200 Firmware Upgrade Procedure



7. A Windows explorer window will open. Find the latest firmware, typically labeled Firmware 1_4_8.pbin. The numbers in the filename will increase as new firmware is released. Choose the file with the highest number if more than one is found to ensure the latest firmware is chosen. For example, Firmware 1_6_8.pbin is newer than Firmware 1_5_8.pbin. The default path for the firmware folder is C:\Program Files\PCS\D200\Firmware. Select the file and click open.
8. The firmware upgrade process will begin.
9. During the upgrade process, a status bar will indicate the progress. When it is complete a message box will appear indicating the firmware upgrade process was successful. Click OK to clear this box.



This concludes the firmware upgrade procedure. For further questions or information, please contact Powertrain Control Solutions Technical Support.