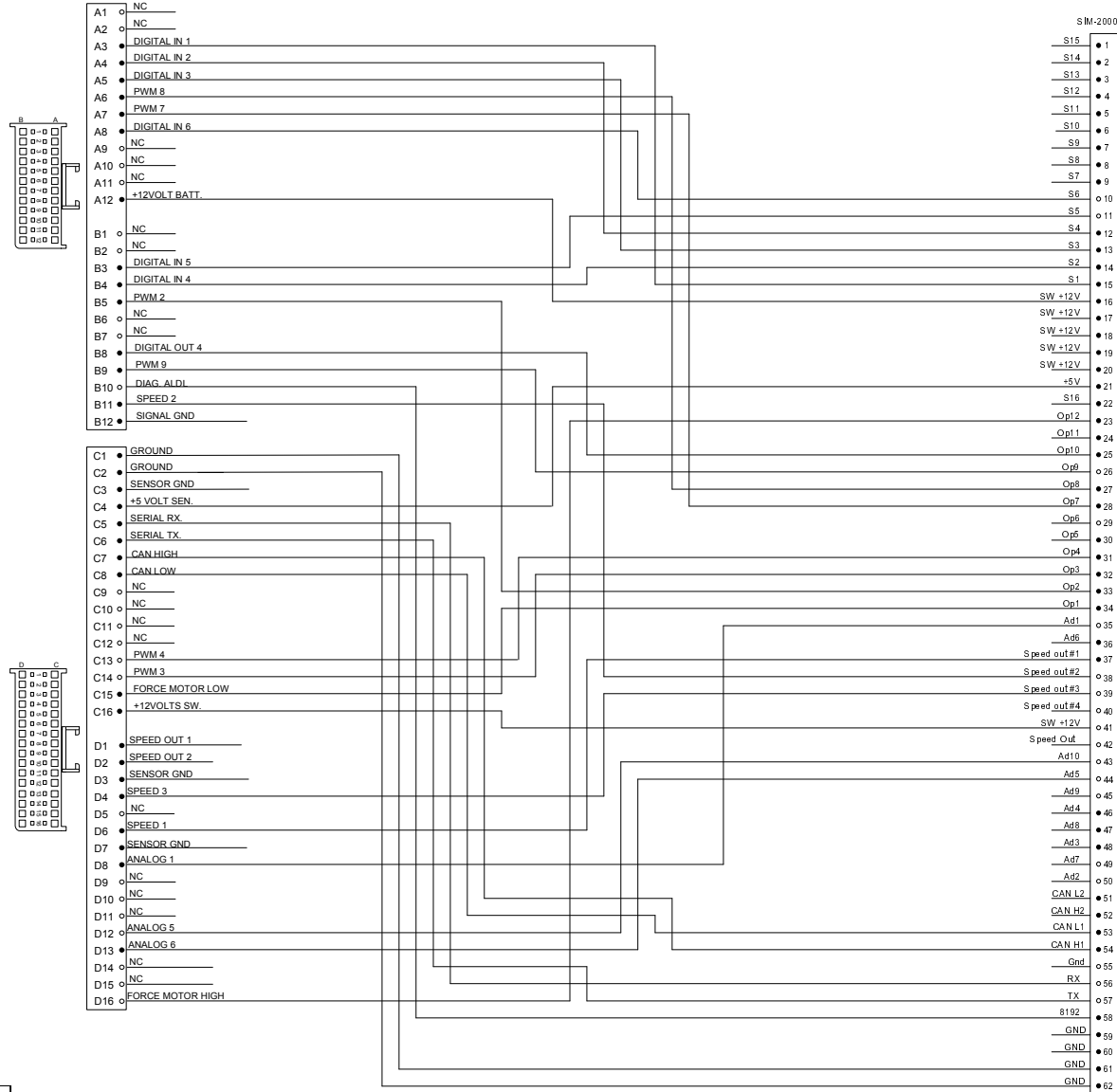
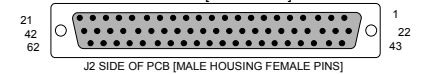


TCU-2100\2300



USED ON BREAKOUT BOARD AND SIMULATOR PCB
CONN D-SUB RCPT R/A 62POS GOLD [PCB]
5748394-5 [A31958-ND]



WIRE COLOR ABBREVIATIONS		
TXT	COLOR	NOTES
BLK	BLACK	
BRN	BROWN	
RED	RED	
ORN	ORANGE	
YEL	YELLOW	
LT.GRN	LIGHT GREEN	
GRN	GREEN	
LT.BLU	LIGHT BLUE	
BLU	BLUE	
VIO	VIOLET	
GRY	GRAY	
WHT	WHITE	
PNK	PINK	

REVISION HISTORY					
LEVEL	DESCRIPTION	DATE	DRN	APP	

APPLICABLE STANDARDS

- ASME Y14.100-200
- ASME Y14.5M-1994
- IPC/WHMA-A-620A-CLASS 2
- MARK IAW MIL-STD-130.

NOTES:

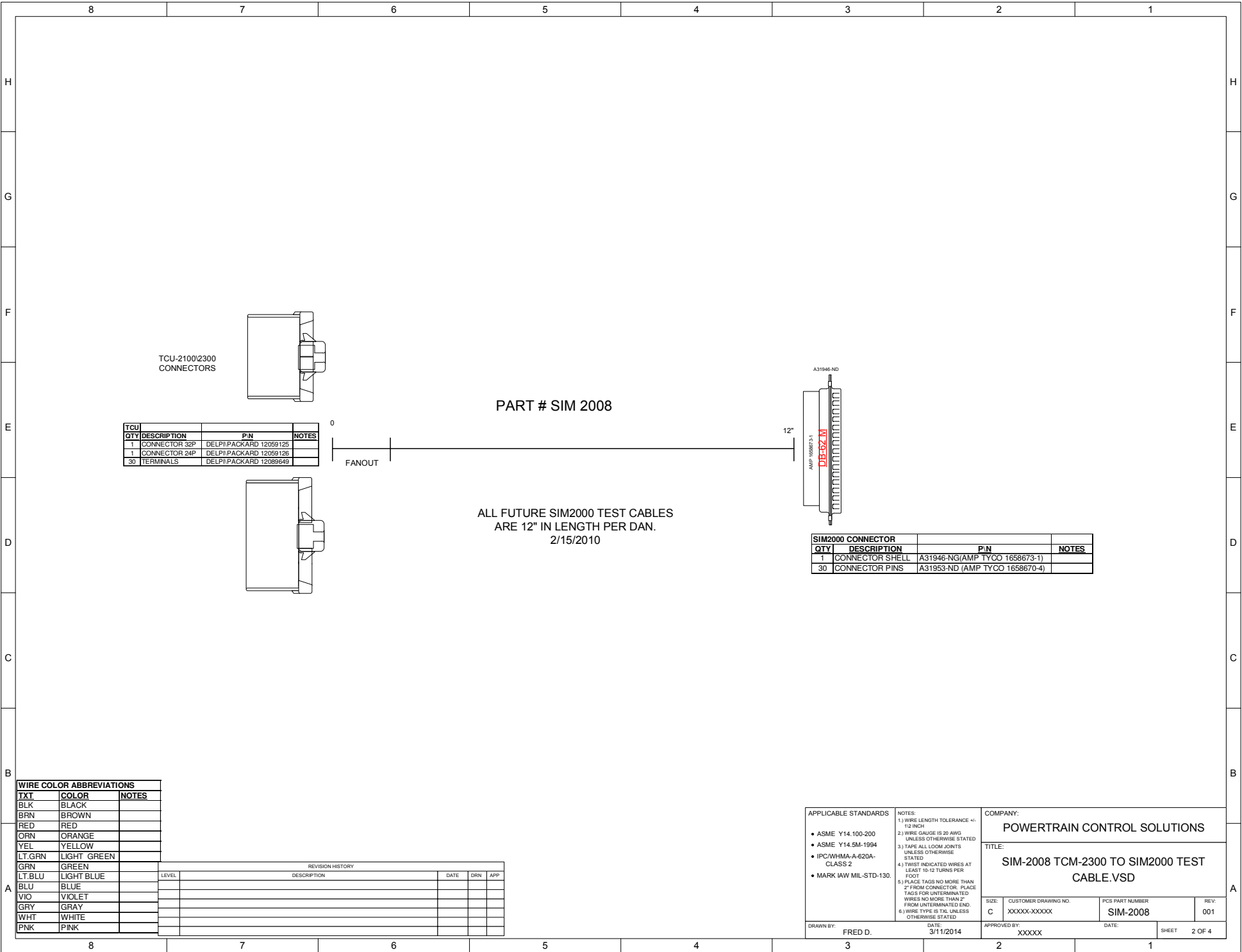
- 1) WIRE LENGTH TOLERANCE +/- .10 INCH
- 2) WIRE GAUGE IS 20 AWG UNLESS OTHERWISE STATED
- 3) TAPE ALL LOOM JOINTS UNLESS OTHERWISE STATED
- 4) TWIST INDICATED WIRES AT LEAST 10-12 TURNS PER FOOT
- 5) PLACE TAGS NO MORE THAN 2" FROM CONNECTOR. PLACE TAGS FOR UNTERMINATED WIRES NO MORE THAN 7" FROM UNTERMINATED END.
- 6) WIRE TYPE IS TXL UNLESS OTHERWISE STATED.

DRAWN BY: FRED D. DATE: 3/11/2014

COMPANY:
POWERTRAIN CONTROL SOLUTIONS

TITLE:
SIM-2008 TCM-2300 TO SIM2000 TEST CABLE.VSD

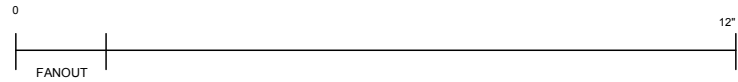
SIZE: C	CUSTOMER DRAWING NO. XXXXX-XXXXX	PCS PART NUMBER: SIM-2008	REV: 001
APPROVED BY: XXXXX	DATE:	SHEET 1 OF 4	



TCU-2100/2300
CONNECTORS

PART # SIM 2008

TCU	DESCRIPTION	P.N	NOTES
1	CONNECTOR 32P	DELPI/PACKARD 12059125	
1	CONNECTOR 24P	DELPI/PACKARD 12059126	
30	TERMINALS	DELPI/PACKARD 12089649	



ALL FUTURE SIM2000 TEST CABLES
ARE 12" IN LENGTH PER DAN.
2/15/2010



SIM2000 CONNECTOR			
QTY	DESCRIPTION	P.N	NOTES
1	CONNECTOR SHELL	A31946-NG/AMP TYCO 1658673-1	
30	CONNECTOR PINS	A31953-ND (AMP TYCO 1658670-4)	

WIRE COLOR ABBREVIATIONS		
XT	COLOR	NOTES
BLK	BLACK	
BRN	BROWN	
RED	RED	
ORN	ORANGE	
YEL	YELLOW	
LT.GRN	LIGHT GREEN	
GRN	GREEN	
LT.BLU	LIGHT BLUE	
BLU	BLUE	
VIO	VIOLET	
GRY	GRAY	
WHT	WHITE	
PNK	PINK	

REVISION HISTORY				
LEVEL	DESCRIPTION	DATE	DRN	APP

APPLICABLE STANDARDS <ul style="list-style-type: none"> ASME Y14.100-200 ASME Y14.5M-1994 IPC/WHMA-A-620A-CLASS 2 MARK IAW MIL-STD-130. 	NOTES: 1) WIRE LENGTH TOLERANCE +/- .12 INCH 2) WIRE GAUGE IS 20 AWG UNLESS OTHERWISE STATED 3) TARE ALL COOK JOINTS UNLESS OTHERWISE STATED 4) TWIST INDICATED WIRES AT LEAST 10-12 TURNS PER FOOT 5) PLACE TAGS NO MORE THAN 2" FROM CONNECTOR. PLACE TAGS FOR UNTERMINATED WIRES NO MORE THAN 2" FROM UNTERMINATED END. 6) WIRE TYPE IS TXL UNLESS OTHERWISE STATED.	COMPANY: POWERTRAIN CONTROL SOLUTIONS TITLE: SIM-2008 TCM-2300 TO SIM2000 TEST CABLE.VSD
SIZE: C CUSTOMER DRAWING NO.: XXXXX-XXXXX DATE: 3/11/2014	PCS PART NUMBER: SIM-2008 REV: 001	APPROVED BY: FRED D. DATE: 3/11/2014 DATE: XXXXX
SHEET 2 OF 4		DATE: XXXXX