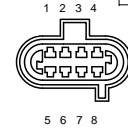
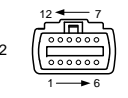


REVISION HISTORY				
LEVEL	DESCRIPTION	DATE	DRN	APP
1	RELEASE			



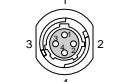
QTY	DESCRIPTION	PCS P/N	NOTES
1	Connector	CON-2131	
1	TPA	CON-2126	
9	Terminal	CON-2120	



QTY	DESCRIPTION	PCS P/N	NOTES
1	Connector	CON-2133	WPTS90
1	TPA	CON-2128	Red
9	Terminal	CON-2121	



QTY	DESCRIPTION	PCS P/N	NOTES
1	CONNECTOR	CON-3416	
3	TERMINALS	CON-1038	
1	TPA	CON-3417	CREAM
3	CABLE SEALS	CON-1027	WHT



QTY	DESCRIPTION	PCS P/N	NOTES
1	CONNECTOR	CON-0065	
4	TERMINALS	CON-0051	



QTY	DESCRIPTION	PCS P/N	NOTES
1	CONNECTOR	CON-5050	
2	TERMINALS	CON-5200	(20-18gauge)
1	WEDGE LOCK	CON-5100	ORN



QTY	DESCRIPTION	PCS P/N	NOTES
1	CONNECTOR	CON-2302	
3	TERMINALS	CON-1006	
3	CABLE SEALS	CON-1004	VIO

QTY	DESCRIPTION	PCS P/N	NOTES
1	CONNECTOR	CON-2307	
2	TERMINALS	CON-1011	20 AWG
2	CABLE SEALS	CON-1004	VIO
1	PLUG	CON-0999	GRN



S#	FUNCTION	COLOR
S1	SWITCHED +12V DC	RED
S2	GROUND	BLK
S3	SENSOR GROUND	BLKWHT
S4	NONE	NONE
S5	CAN HIGH	WHTRED
S6	CAN LOW	WHTBLK

TXT	COLOR	NOTES
BLK	BLACK	
BRN	BROWN	
RED	RED	
ORN	ORANGE	
YEL	YELLOW	
LT.GRN	LIGHT GREEN	
GRN	GREEN	
LT.BLU	LIGHT BLUE	
BLU	BLUE	
VIO	VIOLET	
GRY	GRAY	
WHT	WHITE	
PNK	PINK	

F#	DESCRIPTION	PCS P/N	NOTES
1	CONNECTOR	CON-2200	
1	FUSE CAP.	CON-2201	BLK
1	TPA	CON-2202	BLU
2	TERMINAL	CON-1020	(18-16 AWG)
1	FUSE	CON-2221	10A
2	CABLE SEAL	CON-1001	GRN

QTY	DESCRIPTION	PCS P/N	NOTES
1	RING TERM.	CON-0350	

APPLICABLE STANDARDS

- ASME Y14.100-200
- ASME Y14.5M-1994
- IPC/WHMA-A-620A-CLASS 2
- MARK IAW MIL-STD-130.

NOTES:

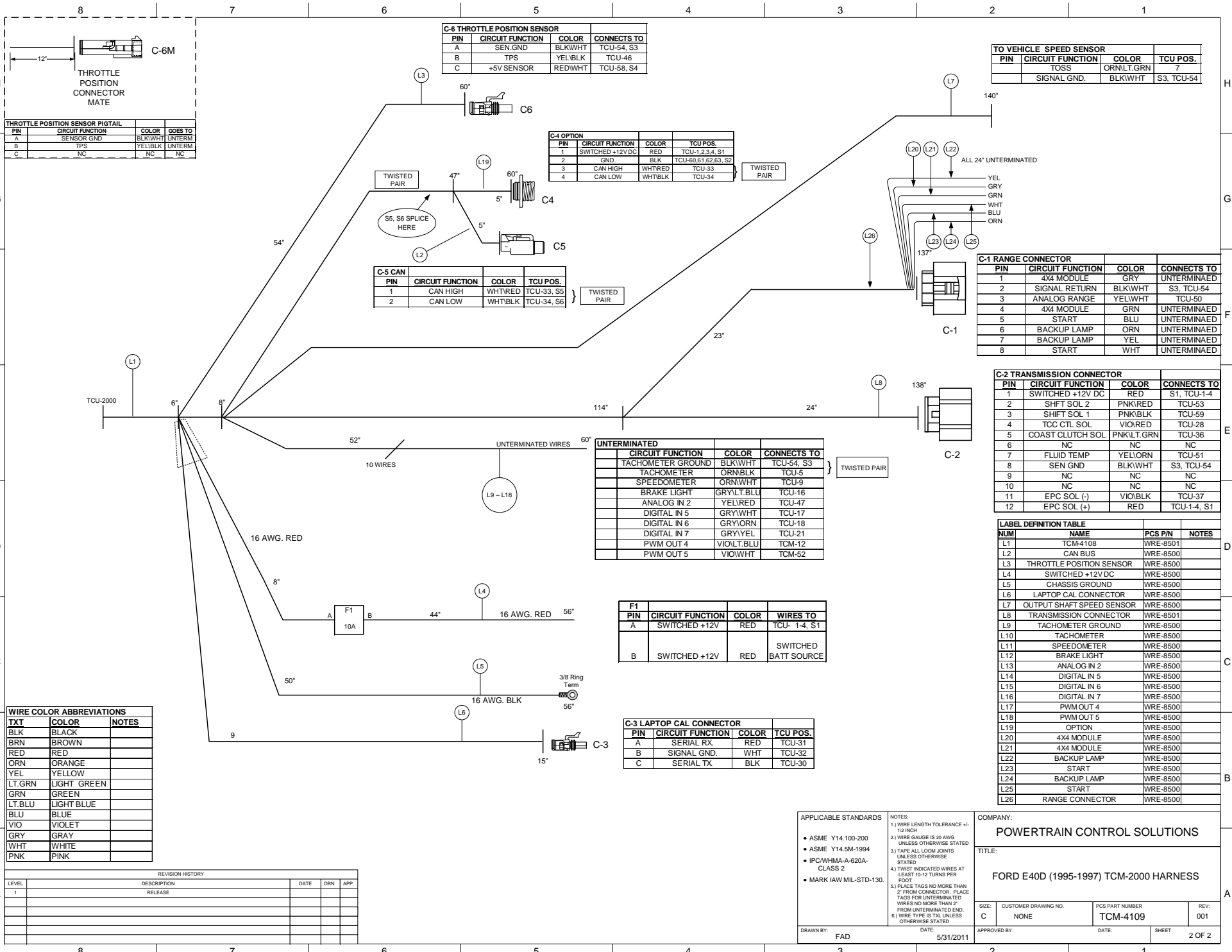
- WIRE LENGTH TOLERANCE +/- 1/2 INCH
- WIRE GAUGE IS 20 AWG UNLESS OTHERWISE STATED
- TAPE ALL LOOM JOINTS UNLESS OTHERWISE STATED
- TWIST INDICATED WIRES AT LEAST 10-12 TURNS PER FOOT
- PLACE TAGS NO MORE THAN 2" FROM CONNECTOR. PLACE TAGS FOR UNTERMINATED WIRES NO MORE THAN 2" FROM UNTERMINATED END.
- WIRE TYPE IS TXL UNLESS OTHERWISE STATED

COMPANY: **POWERTRAIN CONTROL SOLUTIONS**

TITLE: **FORD E40D (1995-1997) TCM-2000 HARNESS**

SIZE: C CUSTOMER DRAWING NO. NONE PCS PART NUMBER: TCM-4109 REV: 001

DATE: 5/31/2011 SHEET 1 OF 2



C-6 THROTTLE POSITION SENSOR			
PIN	CIRCUIT FUNCTION	COLOR	CONNECTS TO
A	SEN.GND	BLK/WHT	TCU-54, S3
B	TPS	YEL/BLK	TCU-46
C	+5V SENSOR	RED/WHT	TCU-58, S4

TO VEHICLE SPEED SENSOR			
PIN	CIRCUIT FUNCTION	COLOR	TCU POS.
	TOSS	ORN/LT.GRN	7
	SIGNAL GND.	BLK/WHT	S3, TCU-54

THROTTLE POSITION SENSOR PIGTAIL			
PIN	CIRCUIT FUNCTION	COLOR	GOES TO
A	SENSOR GND	BLK/WHT	UNTERM
B	TPS	YEL/BLK	UNTERM
C	NC	NC	NC

C-4 OPTION			
PIN	CIRCUIT FUNCTION	COLOR	TCU POS.
1	SWITCHED +12V DC	RED	TCU-1,2,3,4, S1
2	GND.	BLK	TCU-60,61,62,63, S2
3	CAN HIGH	WHT/RED	TCU-33
4	CAN LOW	WHT/BLK	TCU-34

C-5 CAN			
PIN	CIRCUIT FUNCTION	COLOR	TCU POS.
1	CAN HIGH	WHT/RED	TCU-33, S5
2	CAN LOW	WHT/BLK	TCU-34, S6

UNTERMINATED			
CIRCUIT FUNCTION	COLOR	CONNECTS TO	
TACHOMETER GROUND	BLK/WHT	TCU-54, S3	} TWISTED PAIR
TACHOMETER	ORN/BLK	TCU-5	
SPEEDOMETER	ORN/WHT	TCU-9	
BRAKE LIGHT	GRY/LT.BLU	TCU-16	
ANALOG IN 2	YEL/RED	TCU-47	
DIGITAL IN 5	GRY/WHT	TCU-17	
DIGITAL IN 6	GRY/ORN	TCU-18	
DIGITAL IN 7	GRY/YEL	TCU-21	
PWM OUT 4	VIO/LT.BLU	TGM-12	
PWM OUT 5	VIO/WHT	TGM-52	

C-1 RANGE CONNECTOR			
PIN	CIRCUIT FUNCTION	COLOR	CONNECTS TO
1	4X4 MODULE	GRY	UNTERMINAED
2	SIGNAL RETURN	BLK/WHT	S3, TCU-54
3	ANALOG RANGE	YEL/WHT	TCU-50
4	4X4 MODULE	GRN	UNTERMINAED
5	START	BLU	UNTERMINAED
6	BACKUP LAMP	ORN	UNTERMINAED
7	BACKUP LAMP	YEL	UNTERMINAED
8	START	WHT	UNTERMINAED

C-2 TRANSMISSION CONNECTOR			
PIN	CIRCUIT FUNCTION	COLOR	CONNECTS TO
1	SWITCHED +12V DC	RED	S1, TCU-1,4
2	SHIFT SOL 2	PNK/RED	TCU-53
3	SHIFT SOL 1	PNK/BLK	TCU-59
4	TCC CTL SOL	VIO/RED	TCU-28
5	COAST CLUTCH SOL	PNK/LT.GRN	TCU-36
6	NC	NC	NC
7	FLUID TEMP	YEL/ORN	TCU-51
8	SEN GND	BLK/WHT	S3, TCU-54
9	NC	NC	NC
10	NC	NC	NC
11	EPC SOL (-)	VIO/BLK	TCU-37
12	EPC SOL (+)	RED	TCU-1,4, S1

LABEL DEFINITION TABLE			
NUM	NAME	PCS PIN	NOTES
L1	TCM-108	WRE-8501	
L2	CAN BUS	WRE-8500	
L3	THROTTLE POSITION SENSOR	WRE-8500	
L4	SWITCHED +12V DC	WRE-8500	
L5	CHASSIS GROUND	WRE-8500	
L6	LAPTOP CAL CONNECTOR	WRE-8500	
L7	OUTPUT SHAFT SPEED SENSOR	WRE-8500	
L8	TRANSMISSION CONNECTOR	WRE-8501	
L9	TACHOMETER GROUND	WRE-8500	
L10	TACHOMETER	WRE-8500	
L11	SPEEDOMETER	WRE-8500	
L12	BRAKE LIGHT	WRE-8500	
L13	ANALOG IN 2	WRE-8500	
L14	DIGITAL IN 5	WRE-8500	
L15	DIGITAL IN 6	WRE-8500	
L16	DIGITAL IN 7	WRE-8500	
L17	PWM OUT 4	WRE-8500	
L18	PWM OUT 5	WRE-8500	
L19	OPTION	WRE-8500	
L20	4X4 MODULE	WRE-8500	
L21	4X4 MODULE	WRE-8500	
L22	BACKUP LAMP	WRE-8500	
L23	START	WRE-8500	
L24	BACKUP LAMP	WRE-8500	
L25	START	WRE-8500	
L26	RANGE CONNECTOR	WRE-8500	

WIRE COLOR ABBREVIATIONS		
TXT	COLOR	NOTES
BLK	BLACK	
BRN	BROWN	
RED	RED	
ORN	ORANGE	
YEL	YELLOW	
LT.GRN	LIGHT GREEN	
GRN	GREEN	
LT.BLU	LIGHT BLUE	
BLU	BLUE	
VIO	VIOLET	
GRY	GRAY	
WHT	WHITE	
PNK	PINK	

F1			
PIN	CIRCUIT FUNCTION	COLOR	WIRES TO
A	SWITCHED +12V	RED	TCU- 14, S1
B	SWITCHED +12V	RED	SWITCHED BATT SOURCE

C-3 LAPTOP CAL CONNECTOR			
PIN	CIRCUIT FUNCTION	COLOR	TCU POS.
A	SERIAL RX	RED	TCU-31
B	SIGNAL GND.	WHT	TCU-32
C	SERIAL TX	BLK	TCU-30

REVISION HISTORY				
LEVEL	DESCRIPTION	DATE	DRN	APP
1	RELEASE			

APPLICABLE STANDARDS

- ASME Y14.100-200
- ASME Y14.5M-1994
- IPC/WHMA-A-620A-CLASS 2
- MARK IAW MIL-STD-130.

NOTES:

- WIRE LENGTH TOLERANCE +/- .12 INCH
- WIRE GAUGE IS 20 AWG UNLESS OTHERWISE STATED
- TAPE ALL LOOM JOINTS UNLESS OTHERWISE STATED
- TWIST INDICATED WIRES AT LEAST 10-12 TURNS PER FOOT
- PLACE TAGS NO MORE THAN 2" FROM UNTERMINATED END.
- WIRE TYPE IS TX UNLESS OTHERWISE STATED

COMPANY: POWERTRAIN CONTROL SOLUTIONS

TITLE: FORD E40D (1995-1997) TCM-2000 HARNESS

SIZE: C	CUSTOMER DRAWING NO. NONE	PCS PART NUMBER TCM-4109	REV: 001
DRAWN BY: FAD	DATE: 5/31/2011	APPROVED BY:	SHEET 2 OF 2