

QTY	DESCRIPTION	PCS	P/N	NOTES
1	CONNECTOR	CON-1070		
2	TERMINALS	CON-1084	20 AWG	
2	CABLE SEAL	CON-1093	GRN	GRN
1	TPA	CON-1072	GRY	



QTY	DESCRIPTION	PCS	P/N	NOTES
1	CONNECTOR	CON-1071		
2	TERMINALS	CON-1088	20 AWG	
2	CABLE SEAL	CON-1093		
1	TPA	CON-1072		



QTY	DESCRIPTION	P/N	NOTES
1	CONNECTOR	CON-5538	
4	TERMINALS	CON-5401	
1	TPA	CON-5539	



QTY	DESCRIPTION	PCS	P/N	NOTES
1	CONNECTOR	CON-3416		M/F
3	TERMINALS	CON-1038		
1	TPA	CON-3417		CREAM
3	CABLE SEALS	CON-1027		WHT



QTY	DESCRIPTION	PCS	P/N	NOTES
1	CONNECTOR	CON-5538		
1	SPADE CONNECT	CON-2503		



QTY	DESCRIPTION	PCS	P/N	NOTES
1	CONNECTOR	CON-5542		M/F
12	TERMINALS	CON-5400		
1	WEDGE	CON-5508		GRN
1	PLUGS	CON-5530		



QTY	DESCRIPTION	PCS	P/N	NOTES
1	CONNECTOR	CON-5551		M/F
12	TERMINALS	CON-5400		
1	WEDGE	CON-5508		GRN
1	PLUGS	CON-5530		



QTY	DESCRIPTION	PCS	P/N	NOTES
1	CONNECTOR	CON-5540		
3	TERMINALS	CON-5400		
1	WEDGE LOCK	CON-5541		
1	PLUGS	CON-5530		



QTY	DESCRIPTION	PCS	P/N	NOTES
1	CONNECTOR	CON-5540		
1	WEDGE	CON-5541		
1	PLUGS	CON-5530		

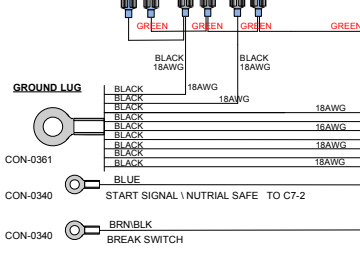
QTY	DESCRIPTION	PCS	P/N	NOTES
1	CONNECTOR	CON-5520		
6	TERMINALS	CON-5400		
1	TPA	CON-5521		

Print Date  
12/17/2019  
1700

APPLICABLE STANDARDS	NOTES
• ASME Y14.100-200	1) WIRE LENGTH TOLERANCE +/-
• ASME Y14.101-200	2) WIRE GAUGE IS 20AWG
• ASME Y14.104-1994	3) WIRE SIZE TO BE EXACTLY STATED
• IPC-D-300	4) WIRE GAUGE IS 20AWG
• IPC-D-300A-420A	5) WIRE GAUGE IS 20AWG
• MARRIAGE WIRE (STD-130)	6) WIRE GAUGE IS 20AWG
	7) WIRE GAUGE IS 20AWG
	8) WIRE GAUGE IS 20AWG
	9) WIRE GAUGE IS 20AWG
	10) WIRE GAUGE IS 20AWG
	11) WIRE GAUGE IS 20AWG
	12) WIRE GAUGE IS 20AWG

COMPANY	TITLE
POWERTRAIN CONTROL SOLUTIONS	DELTA M1A DEUTZ TRANSMISSION HARNESS

QTY	DESCRIPTION	P/N	NOTES
6	CONNECTOR	CON-0354	F



NUM	NAME	PART #	STOCK #	NOTES
L1	TCM-4880-001	P-569	594-01105	
L2	TRANSMISSION CONNECTOR	P-107	594-09105	
L3	TOSS	P-8	594-09105	
L4	DASH BULKHEAD CONNECTOR	P-573	594-09105	
L5	DIAGNOSTIC COM CONNECTOR	P-337	594-09105	
L6	PARK BRAKE	P-227	594-09105	
L7	E-RPM	P-380	594-09105	
L8	GROUND GROUP	P-548	594-09105	
L9	START SIGNAL	P-579	594-01105	
L10	BRAKE SWITCH PRESSURE	P-516	594-09105	
L11	ECAL	P-570	594-01105	
L12	SHIFTER CONNECTOR	P-280	594-09105	
L13	TIMER PIN # 1	P-575	594-09105	
L14	TIMER PIN # 2	P-576	594-09105	
L15	TIMER PIN # 3	P-577	594-09105	
L16	TIMER PIN # 8	P-578	594-09105	
L17	LH RVLTR	P-561	594-09105	
L18	LH RVLTR	P-562	594-09105	
L19	REF HORN	P-571	594-01105	
L20	REF HORN	P-572	594-09105	
L21	REV HORN OUTPUT	P-571	594-01105	
L22	INCHING OPTION	P-572	594-09105	
L23	RH REV LIGHTS	P-561	594-09105	
L24	RH REV LIGHTS	P-562	594-09105	
L25	TIMER RELAY SIGNAL	P-582	594-09105	
L26	CUT OFF RELAY TERM 87	P-586	594-09105	

S-#	FUNCTION	COLOR
S1	12 VOLTS SWITCHED	YEL
S2	SIG GND	BLK/WHT
S3	GROUND 1	BLK/WHT
S4	CAN HIGH	WHT/RED
S5	CAN LOW	WHT/BLK
S6	POWER	RED
S7	IES POWER	YELLOW

C-3 E-RPM CONNECTOR			
PIN	CIRCUIT FUNCTION	COLOR	TCU POS.
1	+12V SW	YEL	TCU-19 SPLICE
2	BRN/ORN	BRN/ORN	TCU-34
3	GROUND	BLACK	TCU-42 SPLICE
4	NC	NC	NC

QTY	DESCRIPTION	PCS P/N	NOTES
1	CONNECTOR	CON-1071	
2	TERMINALS	CON-1084	20 AWG
2	CABLE SEAL	CON-1093	
1	TPA	CON-1072	

C-8 PARKING BRAKE SENSOR CONNECTOR			
QTY	DESCRIPTION	PCS P/N	NOTES
1	CONNECTOR	CON-5540	
3	TERMINALS	CON-5400	
1	CABLE SEAL	CON-5401	

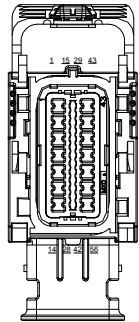
PIN	CIRCUIT FUNCTION	COLOR	NOTES
1	S1 TCU-19 S1	YELLOW	
2	TCU PIN-34	BROWN	
3	TO GND RING TERM	BLACK	
4	NC	NC	NC

C-2 TOSS SHAFT SPEED SENSOR FEMALE			
QTY	DESCRIPTION	PCS P/N	NOTES
1	CONNECTOR	CON-1070	
2	TERMINALS	CON-1084	20 AWG
2	CABLE SEAL	CON-1093	GRN
1	TPA	CON-1072	GRN

C-2 TOSS CONNECTOR			
PIN	CIRCUIT FUNCTION	COLOR	TCU POS.
1	TOSS	ORN RED	TCU-25
2	SIGNAL GND	BLK/WHT	TCU-23

SEE SCHEMATIC 1 FOR CONNECTIONS



TCU

@0"

L1

@10"

@12"

@13"

@17"

L2

@24"

L7

A B  
FRONT VIEW  
@17"



L6

@21"

3

4

2

1

18

A

E

D

K

S

R

W

T

L

C-1

Trans connector

To wire group, GRAY  
CONNECTOR  
CON-5542  
STARTS AT 10"

To wire group, BLK  
CONNECTOR  
CON-5551  
STARTS AT 12"

C-8

PARKING  
BRAKE  
SENSOR

1

2

3

4

@37"

L3

TOSS  
CON-1070

C-2

A B  
FRONT VIEW

2

Print Date  
12/17/2019  
1700

S-#	FUNCTION	COLOR
S1	12 VOLTS SWITCHED	YEL
S2	SIG GND	BLK/WHT
S3	GROUND 1	BLK/WHT
S4	CAN HIGH	WHT/RED
S5	CAN LOW	WHT/BLK
S6	POWER	RED
S7	IES POWER	YELLOW

REVISION HISTORY				
LEVEL	DESCRIPTION	DATE	DRN	APP
1	RELEASED NOT COMPLETE	11/26/19	FD	
1	RELEASED	12/9/19	FD	

FULL FILENAME  
\\PCSSTORAGE\PCS\_WORK\ENGINEERING\HARNESST\TRANSMISSION  
CONTROLLERS\TCM-2800\HARNESSES\TCM-4880-001 DELTA M1A [MLC]  
TRANSMISSION HARNES\DELTA M1A [MLC] TRANSMISSION HARNES\TCM-  
4880-001 DELTA M1A [MLC] TRANSMISSION HARNES.VSD

APPLICABLE STANDARDS

- ASME Y14.100-200
- ASME Y14.5M-1994
- IPC/WHMA-A-620A-CLASS 2
- MARK IAW MIL-STD-130.

NOTES

- 1) WIRE LENGTH TOLERANCE +/- 1/2 INCH
- 2) WIRE GAUGE IS 20 AWG UNLESS OTHERWISE STATED
- 3) TAPE ALL LOOM JOINTS UNLESS OTHERWISE STATED
- 4) TWIST INDICATED WIRES AT LEAST 10-12 TURNS PER FOOT
- 5) PLACE TAGS NO MORE THAN 2" FROM CONNECTOR. PLACE TAGS FOR UNTERMINATED WIRES NO MORE THAN 2" FROM UNTERMINATED END.
- 6) WIRE TYPE IS TXL UNLESS OTHERWISE STATED

COMPANY:  
POWERTRAIN CONTROL SOLUTIONS

TITLE:  
DELTA M1A DEUTZ TRANSMISSION  
HARNES

SIZE: C	CUSTOMER DRAWING NO.	PCS PART NUMBER TCM-4880	REV: 001
DRAWN BY: FRED	DATE: 10/31/2019	APPROVED BY:	DATE: SHEET PAGE 2

NUM	NAME	PART #	STOCK #	NOTES
L1	TCM-4880-001	P-569	594-01105	
L2	TRANSMISSION CONNECTOR	P-107	594-09105	
L3	TOSS	P-8	594-09105	
L4	DASH BULKHEAD CONNECTOR	P-573	594-09105	
L5	DIAGNOSTIC COM CONNECTOR	P-337	594-09105	
L6	PARK BRAKE	P-227	594-09105	
L7	E-RPM	P-380	594-09105	
L8	GROUND GROUP	P-548	594-09105	
L9	START SIGNAL	P-579	594-01105	
L10	BRAKE SWITCH PRESSURE	P-516	594-09105	
L11	ECAL	P-570	594-01105	
L12	SHIFTER CONNECTOR	P-280	594-09105	
L13	TIMER PIN # 1	P-575	594-09105	
L14	TIMER PIN # 2	P-576	594-09105	
L15	TIMER PIN # 3	P-577	594-09105	
L16	TIMER PIN # 8	P-578	594-09105	
L17	LH RV LITR	P-561	594-09105	
L18	LH RV LITR	P-562	594-09105	
L19	REF HORN	P-571	594-01105	
L20	REF HORN	P-572	594-09105	
L21	REV HORN OUTPUT	P-571	594-01105	
L22	INCHING OPTION	P-572	594-09105	
L23	RH REV LIGHTS	P-561	594-09105	
L24	RH REV LIGHTS	P-562	594-09105	
L25	TIMER RELAY SIGNAL	P-582	594-09105	
L26	CUT OFF RELAY TERM 87	P-586	594-09105	

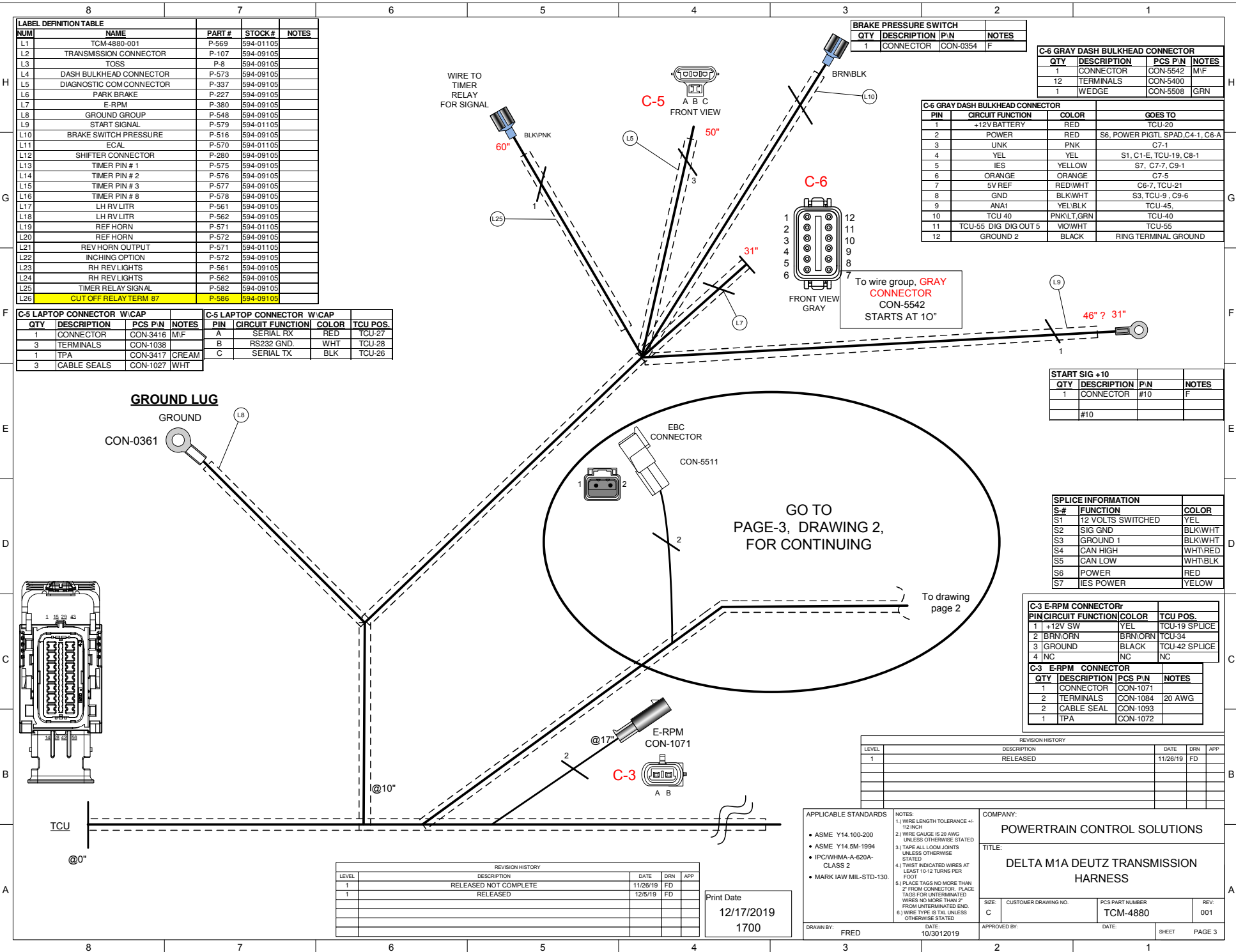
QTY	DESCRIPTION	PCS P/N	NOTES
1	CONNECTOR	CON-3416	M/F
3	TERMINALS	CON-1038	
1	TPA	CON-3417	CREAM
3	CABLE SEALS	CON-1027	WHT

QTY	DESCRIPTION	PCS P/N	NOTES
1	CONNECTOR	CON-3416	M/F
3	TERMINALS	CON-1038	
1	TPA	CON-3417	CREAM
3	CABLE SEALS	CON-1027	WHT

QTY	DESCRIPTION	P/N	NOTES
1	CONNECTOR	CON-0354	F

QTY	DESCRIPTION	PCS P/N	NOTES
1	CONNECTOR	CON-5542	M/F
12	TERMINALS	CON-5400	
1	WEDGE	CON-5508	GRN

PIN	CIRCUIT FUNCTION	COLOR	GOES TO
1	+12V BATTERY	RED	TCU-20
2	POWER	RED	S6, POWER PIGTL SPAD, C4-1, C6-A
3	UNK	PNK	C7-1
4	YEL	YEL	S1, C1-E, TCU-19, C8-1
5	IES	YELLOW	S7, C7-7, C9-1
6	ORANGE	ORANGE	C7-5
7	5V REF	RED/WHT	C6-7, TCU-21
8	GND	BLK/WHT	S3, TCU-9, C9-6
9	ANA1	YEL/BLK	TCU-45,
10	TCU-40	PNK/LT.GRN	TCU-40
11	TCU-55 DIG DIG OUT 5	W/OWHT	TCU-55
12	GROUND 2	BLACK	RING TERMINAL GROUND



To wire group, GRAY CONNECTOR CON-5542 STARTS AT 10"

QTY	DESCRIPTION	P/N	NOTES
1	CONNECTOR	#10	F
		#10	

S#	FUNCTION	COLOR
S1	12 VOLTS SWITCHED	YEL
S2	SIG GND	BLK/WHT
S3	GROUND 1	BLK/WHT
S4	CAN HIGH	WHT/RED
S5	CAN LOW	WHT/BLK
S6	POWER	RED
S7	IES POWER	YELLOW

PIN	CIRCUIT FUNCTION	COLOR	TCU POS.
1	+12V SW	YEL	TCU-19 SPlice
2	BRN/ORN	BRN/ORN	TCU-34
3	GROUND	BLACK	TCU-42 SPlice
4	NC	NC	NC

QTY	DESCRIPTION	PCS P/N	NOTES
1	CONNECTOR	CON-1071	
2	TERMINALS	CON-1084	20 AWG
2	CABLE SEAL	CON-1093	
1	TPA	CON-1072	

LEVEL	DESCRIPTION	DATE	DRN	APP
1	RELEASED	11/26/19	FD	

APPLICABLE STANDARDS

- ASME Y14.100-200
- ASME Y14.5M-1994
- IPC/WHMA-A-620A-CLASS 2
- MARK IAW MIL-STD-130.

NOTES

- 1) WIRE LENGTH TOLERANCE +/- 1/2 INCH
- 2) WIRE GAUGE IS 20 AWG UNLESS OTHERWISE STATED
- 3) TAPE ALL LOOM JOINTS UNLESS OTHERWISE STATED
- 4) TWIST INDICATED WIRES AT LEAST 10-12 TURNS PER FOOT
- 5) PLACE TAGS NO MORE THAN 2" FROM CONNECTOR. PLACE TAGS FOR UNTERMINATED WIRES NO MORE THAN 2" FROM UNTERMINATED END.
- 6) WIRE TYPE IS TXL UNLESS OTHERWISE STATED

COMPANY: POWERTRAIN CONTROL SOLUTIONS

TITLE: DELTA M1A DEUTZ TRANSMISSION HARNESS

DATE: 10/30/2019

DRAWN BY: FRED

APPROVED BY:

DATE: 12/17/2019

PCB PART NUMBER: TCM-4880

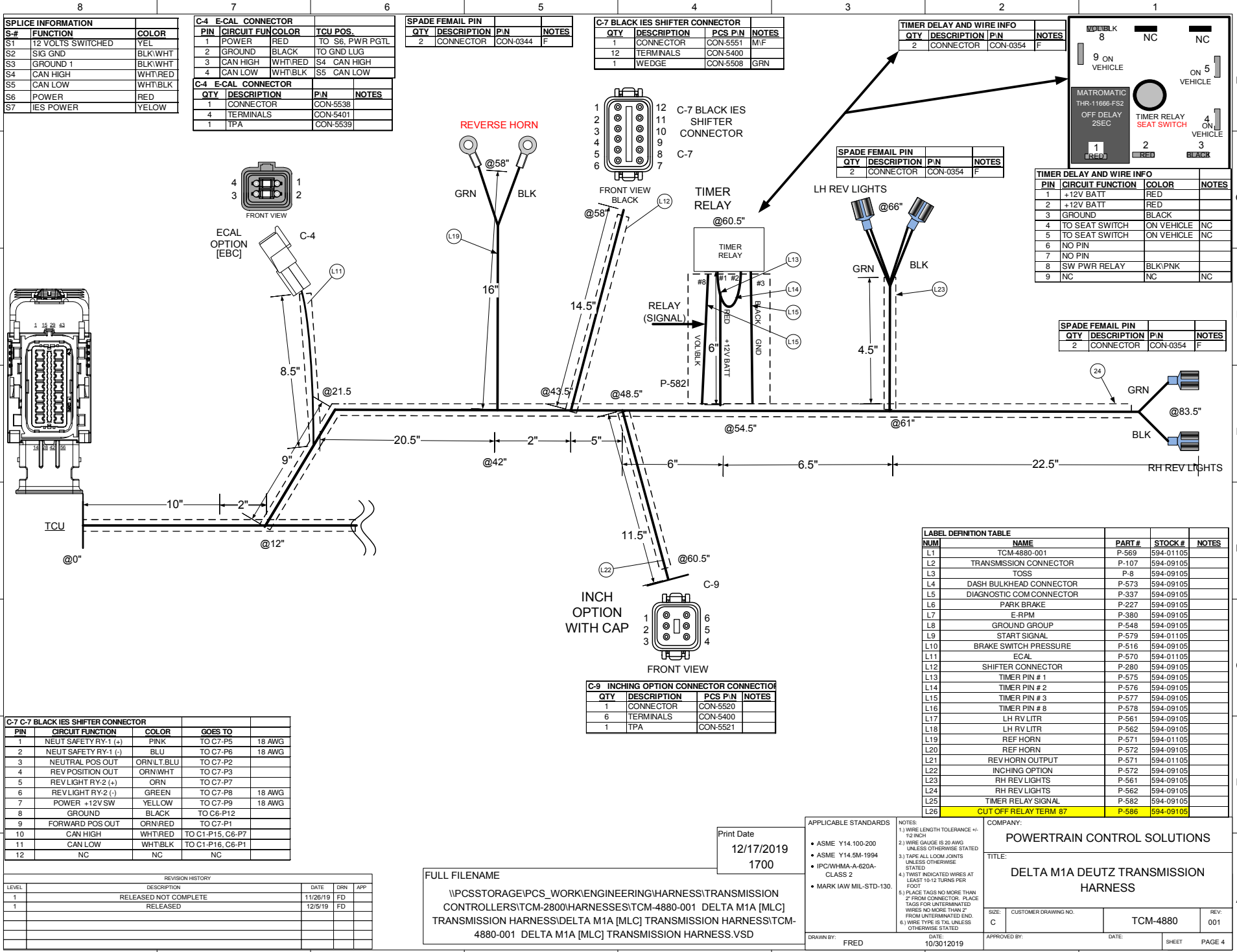
CUSTOMER DRAWING NO: C

REV: 001

SHEET: PAGE 3

LEVEL	DESCRIPTION	DATE	DRN	APP
1	RELEASED NOT COMPLETE	11/26/19	FD	
1	RELEASED	12/5/19	FD	

Print Date  
12/17/2019  
1700



S-#	FUNCTION	COLOR
S1	12 VOLTS SWITCHED	YEL
S2	SIG GND	BLK/WHT
S3	GROUND 1	BLK/WHT
S4	CAN HIGH	WHT/RED
S5	CAN LOW	WHT/BLK
S6	POWER	RED
S7	IES POWER	YELLOW

C-4 E-CAL CONNECTOR			
PIN	CIRCUIT FUN	COLOR	TCU POS.
1	POWER	RED	TO S6, PWR PGTL
2	GROUND	BLACK	TO GND LUG
3	CAN HIGH	WHT/RED	S4 CAN HIGH
4	CAN LOW	WHT/BLK	S5 CAN LOW

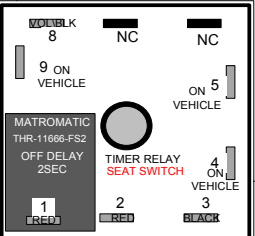
  

C-4 E-CAL CONNECTOR			
QTY	DESCRIPTION	PIN	NOTES
1	CONNECTOR	CON-5538	
4	TERMINALS	CON-5401	
1	TPA	CON-5539	

SPADE FEMAL PIN			
QTY	DESCRIPTION	PIN	NOTES
2	CONNECTOR	CON-0344	F

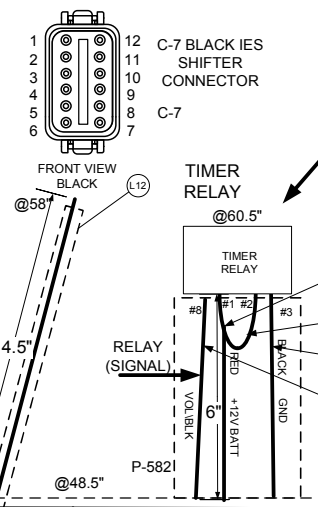
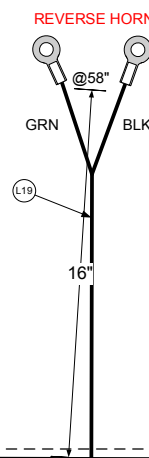
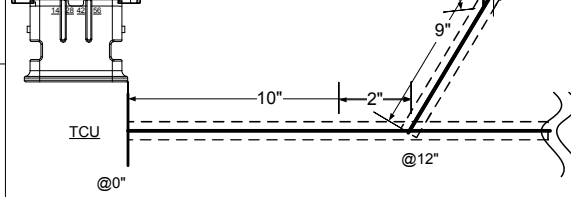
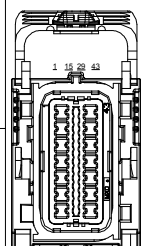
C-7 BLACK IES SHIFTER CONNECTOR			
QTY	DESCRIPTION	PCS P/N	NOTES
1	CONNECTOR	CON-5551	M/F
12	TERMINALS	CON-5400	
1	WEDGE	CON-5508	GRN

TIMER DELAY AND WIRE INFO			
QTY	DESCRIPTION	PIN	NOTES
2	CONNECTOR	CON-0354	F

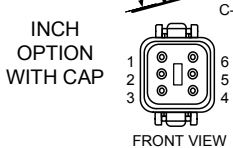
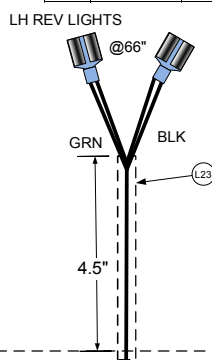


PIN	CIRCUIT FUNCTION	COLOR	NOTES
1	+12V BATT	RED	
2	+12V BATT	RED	
3	GROUND	BLACK	
4	TO SEAT SWITCH	ON VEHICLE	NC
5	TO SEAT SWITCH	ON VEHICLE	NC
6	NO PIN		
7	NO PIN		
8	SW PWR RELAY	BLK/PNK	
9	NC	NC	NC

SPADE FEMAL PIN			
QTY	DESCRIPTION	PIN	NOTES
2	CONNECTOR	CON-0354	F



SPADE FEMAL PIN			
QTY	DESCRIPTION	PIN	NOTES
2	CONNECTOR	CON-0354	F



C-9 INCHING OPTION CONNECTOR CONNECTION			
QTY	DESCRIPTION	PCS P/N	NOTES
1	CONNECTOR	CON-5520	
6	TERMINALS	CON-5400	
1	TPA	CON-5521	

C-7 C-7 BLACK IES SHIFTER CONNECTOR				
PIN	CIRCUIT FUNCTION	COLOR	GOES TO	
1	NEUT SAFETY RY-1 (+)	PINK	TO C7-P5	18 AWG
2	NEUT SAFETY RY-1 (-)	BLU	TO C7-P6	18 AWG
3	NEUTRAL POS OUT	ORN/BLU	TO C7-P2	
4	REV POSITION OUT	ORN/WHT	TO C7-P3	
5	REV LIGHT RY-2 (+)	ORN	TO C7-P7	
6	REV LIGHT RY-2 (-)	GREEN	TO C7-P8	18 AWG
7	POWER +12V SW	YELLOW	TO C7-P9	18 AWG
8	GROUND	BLACK	TO C6-P12	
9	FORWARD POS OUT	ORN/RED	TO C7-P1	
10	CAN HIGH	WHT/RED	TO C1-P15, C6-P7	
11	CAN LOW	WHT/BLK	TO C1-P16, C6-P1	
12	NC	NC	NC	

LABEL DEFINITION TABLE				
NUM	NAME	PART #	STOCK #	NOTES
L1	TCM-4880-001	P-569	594-01105	
L2	TRANSMISSION CONNECTOR	P-107	594-09105	
L3	TOSS	P-8	594-09105	
L4	DASH BULKHEAD CONNECTOR	P-573	594-09105	
L5	DIAGNOSTIC COM CONNECTOR	P-337	594-09105	
L6	PARK BRAKE	P-227	594-09105	
L7	E-RPM	P-380	594-09105	
L8	GROUND GROUP	P-548	594-09105	
L9	START SIGNAL	P-579	594-01105	
L10	BRAKE SWITCH PRESSURE	P-516	594-09105	
L11	ECAL	P-570	594-01105	
L12	SHIFTER CONNECTOR	P-280	594-09105	
L13	TIMER PIN # 1	P-575	594-09105	
L14	TIMER PIN # 2	P-576	594-09105	
L15	TIMER PIN # 3	P-577	594-09105	
L16	TIMER PIN # 8	P-578	594-09105	
L17	LH RV LITR	P-561	594-09105	
L18	LH RV LITR	P-562	594-09105	
L19	REF HORN	P-571	594-01105	
L20	REF HORN	P-572	594-09105	
L21	REV HORN OUTPUT	P-571	594-01105	
L22	INCHING OPTION	P-572	594-09105	
L23	RH REV LIGHTS	P-561	594-09105	
L24	RH REV LIGHTS	P-562	594-09105	
L25	TIMER RELAY SIGNAL	P-582	594-09105	
L26	CUT OFF RELAY TERM 87	P-586	594-09105	

REVISION HISTORY				
LEVEL	DESCRIPTION	DATE	DRN	APP
1	RELEASED NOT COMPLETE	11/26/19	FD	
1	RELEASED	12/5/19	FD	

FULL FILENAME  
 \\PCSSTORAGE\PCS\_WORK\ENGINEERING\HARNES\TRANSMISSION  
 CONTROLLERS\TCM-2800\HARNESSES\TCM-4880-001 DELTA M1A [MLC]  
 TRANSMISSION HARNES\DELTA M1A [MLC] TRANSMISSION HARNES\TCM-  
 4880-001 DELTA M1A [MLC] TRANSMISSION HARNES.VSD

Print Date  
 12/17/2019  
 1700

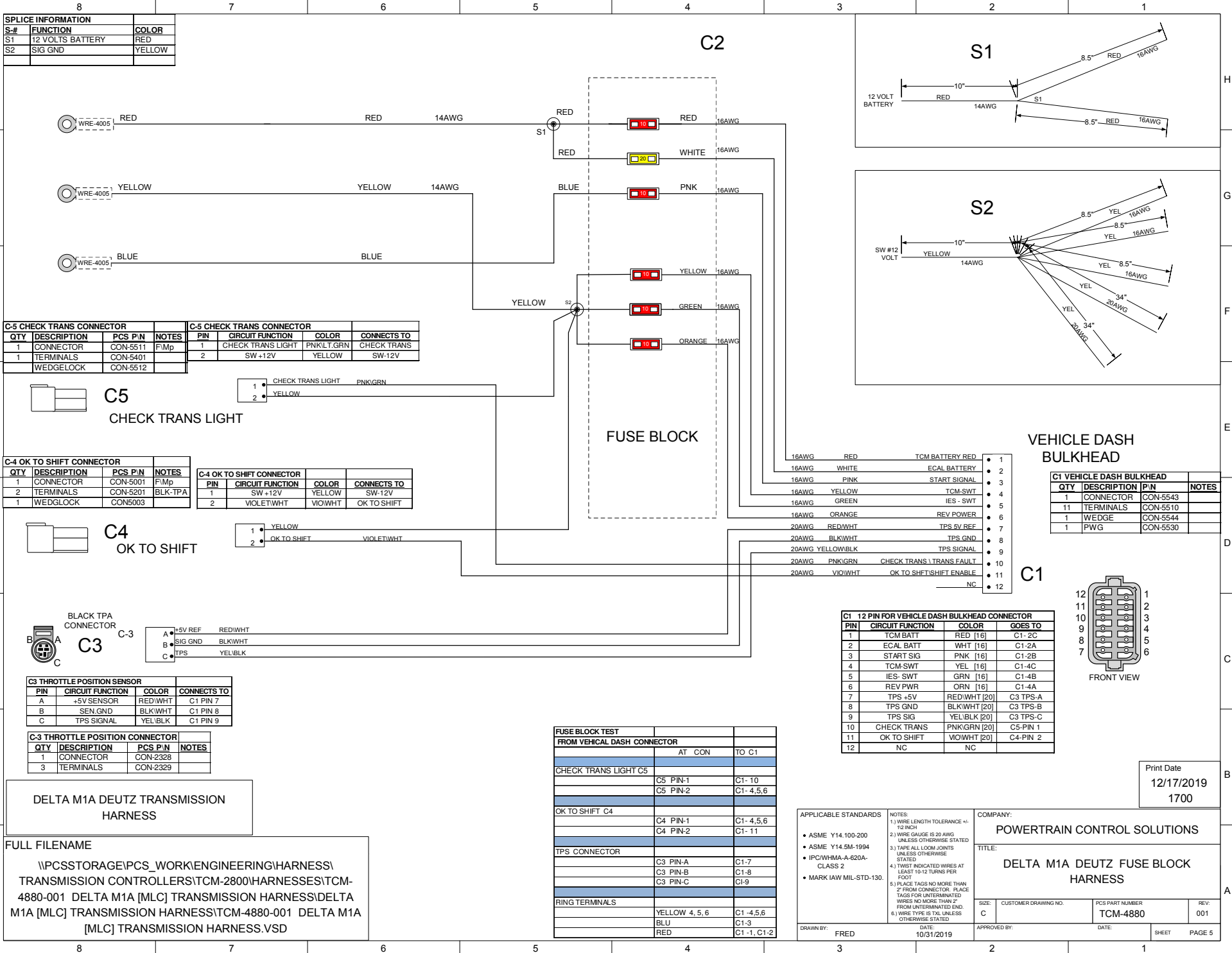
APPLICABLE STANDARDS  
 • ASME Y14.100-200  
 • ASME Y14.5M-1994  
 • IPC/WHMA-A-620A-CLASS 2  
 • MARK IAW MIL-STD-130.

NOTES:  
 1.) WIRE LENGTH TOLERANCE +/- 1/2 INCH  
 2.) WIRE GAUGE IS 20 AWG UNLESS OTHERWISE STATED  
 3.) TAPE ALL LOOM JOINTS UNLESS OTHERWISE STATED  
 4.) TWIST INDICATED WIRES AT LEAST 10-12 TURNS PER FOOT  
 5.) PLACE TAGS NO MORE THAN 2" FROM CONNECTOR. PLACE TAGS FOR UNTERMINATED WIRES NO MORE THAN 2" FROM UNTERMINATED END.  
 6.) WIRE TYPE IS TXL UNLESS OTHERWISE STATED

COMPANY:  
**POWERTRAIN CONTROL SOLUTIONS**

TITLE:  
**DELTA M1A DEUTZ TRANSMISSION HARNES**

DATE: 10/30/2019  
 DRAWN BY: FRED  
 APPROVED BY: [Signature]  
 SHEET: 1  
 PAGE: 4



SPLICE INFORMATION		
S-#	FUNCTION	COLOR
S1	12 VOLTS BATTERY	RED
S2	SIG GND	YELLOW

C-5 CHECK TRANS CONNECTOR				C-5 CHECK TRANS CONNECTOR			
QTY	DESCRIPTION	PCS P/N	NOTES	PIN	CIRCUIT FUNCTION	COLOR	CONNECTS TO
1	CONNECTOR	CON-5511	F/Mp	1	CHECK TRANS LIGHT	PNK/LT.GRN	CHECK TRANS
1	TERMINALS	CON-5401		2	SW +12V	YELLOW	SW-12V
	WEDGLOCK	CON-5512					

C-4 OK TO SHIFT CONNECTOR				C-4 OK TO SHIFT CONNECTOR			
QTY	DESCRIPTION	PCS P/N	NOTES	PIN	CIRCUIT FUNCTION	COLOR	CONNECTS TO
1	CONNECTOR	CON-5001	F/Mp	1	SW +12V	YELLOW	SW-12V
2	TERMINALS	CON-5201	BLK-TPA	2	VIOLETWHT	VIOWHT	OK TO SHIFT
	WEDGLOCK	CON-5003					

C3 THROTTLE POSITION SENSOR			
PIN	CIRCUIT FUNCTION	COLOR	CONNECTS TO
A	+5V SENSOR	RED/WHT	C1 PIN 7
B	SEN GND	BLK/WHT	C1 PIN 8
C	TPS SIGNAL	YEL/BLK	C1 PIN 9

C-3 THROTTLE POSITION CONNECTOR			
QTY	DESCRIPTION	PCS P/N	NOTES
1	CONNECTOR	CON-2328	
3	TERMINALS	CON-2329	

DELTA M1A DEUTZ TRANSMISSION HARNESS

FULL FILENAME  
 \\PCSSTORAGE\PCS\_WORK\ENGINEERING\HARNESS\ TRANSMISSION CONTROLLERS\TCM-2800\HARNESSES\TCM-4880-001 DELTA M1A [MLC] TRANSMISSION HARNESS\DELTA M1A [MLC] TRANSMISSION HARNESS\TCM-4880-001 DELTA M1A [MLC] TRANSMISSION HARNESS.VSD

FUSE BLOCK TEST		
	AT CON	TO C1
CHECK TRANS LIGHT C5	C5 PIN-1	C1- 10
	C5 PIN-2	C1- 4,5,6
OK TO SHIFT C4	C4 PIN-1	C1- 4,5,6
	C4 PIN-2	C1- 11
TPS CONNECTOR	C3 PIN-A	C1-7
	C3 PIN-B	C1-8
	C3 PIN-C	C1-9
RING TERMINALS	YELLOW 4, 5, 6	C1- 4,5,6
	BLU	C1-3
	RED	C1- 1, C1-2

APPLICABLE STANDARDS		NOTES	
• ASME Y14.100-200	• ASME Y14.5M-1994	1.) WIRE LENGTH TOLERANCE +/- 1/2 INCH	2.) WIRE GAUGE IS 20 AWG UNLESS OTHERWISE STATED
• IPC/WHMA-A-620A-CLASS 2	• MARK IAW MIL-STD-130.	3.) TAPE ALL LOOM JOINTS UNLESS OTHERWISE STATED	4.) TWIST INDICATED WIRES AT LEAST 10-12 TURNS PER FOOT
		5.) PLACE TAGS NO MORE THAN 2" FROM CONNECTOR. PLACE TAGS FOR UNTERMINATED WIRES NO MORE THAN 2" FROM UNTERMINATED END.	6.) WIRE TYPE IS TXL UNLESS OTHERWISE STATED

COMPANY: <b>POWERTRAIN CONTROL SOLUTIONS</b>			
TITLE: <b>DELTA M1A DEUTZ FUSE BLOCK HARNESS</b>			
SIZE: C	CUSTOMER DRAWING NO	PCS PART NUMBER <b>TCM-4880</b>	REV: 001
DRAWN BY: FRED	DATE: 10/31/2019	APPROVED BY:	DATE: SHEET PAGE 5

Print Date  
 12/17/2019  
 1700