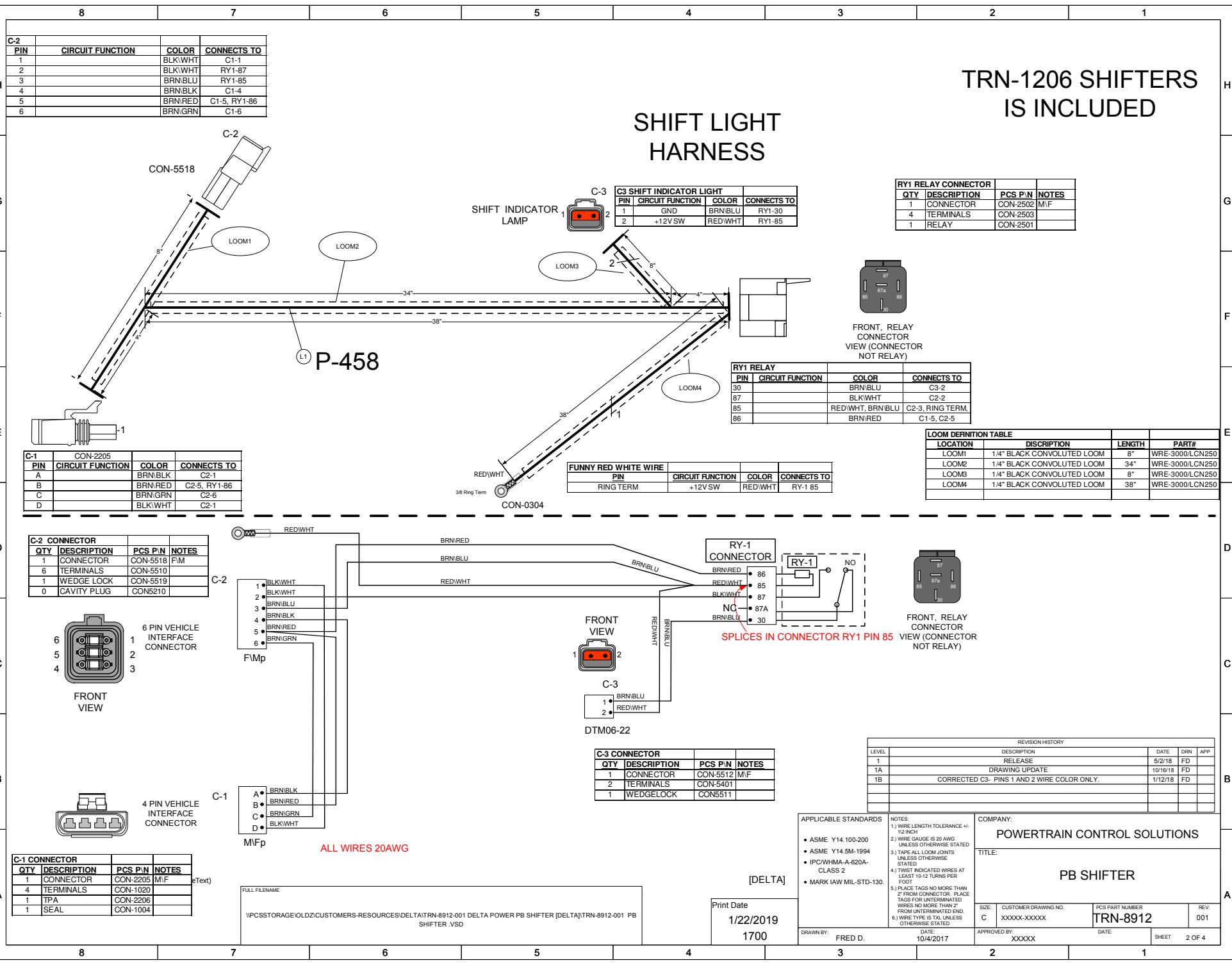


TRN-1206 SHIFTERS IS INCLUDED

SHIFT LIGHT HARNESS



C-2			
PIN	CIRCUIT FUNCTION	COLOR	CONNECTS TO
1		BLK/WHT	C1-1
2		BLK/WHT	RY1-87
3		BRN/BLU	RY1-85
4		BRN/BLK	C1-4
5		BRN/RED	C1-5, RY1-86
6		BRN/GRN	C1-6

C-3 SHIFT INDICATOR LIGHT			
PIN	CIRCUIT FUNCTION	COLOR	CONNECTS TO
1	GND	BRN/BLU	RY1-30
2	+12V SW	RED/WHT	RY1-85

RY1 RELAY CONNECTOR			
QTY	DESCRIPTION	PCS P/N	NOTES
1	CONNECTOR	CON-2502	M/F
4	TERMINALS	CON-2503	
1	RELAY	CON-2501	

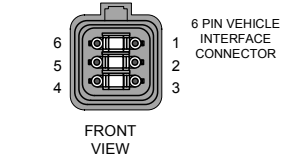
RY1 RELAY			
PIN	CIRCUIT FUNCTION	COLOR	CONNECTS TO
30		BRN/BLU	C3-2
87		BLK/WHT	C2-2
85		RED/WHT, BRN/BLU	C2-3, RING TERM.
86		BRN/RED	C1-5, C2-5

LOOM DEFINITION TABLE			
LOCATION	DISCRIPTION	LENGTH	PART#
LOOM1	1/4" BLACK CONVOLUTED LOOM	8"	WRE-3000/LCN250
LOOM2	1/4" BLACK CONVOLUTED LOOM	34"	WRE-3000/LCN250
LOOM3	1/4" BLACK CONVOLUTED LOOM	8"	WRE-3000/LCN250
LOOM4	1/4" BLACK CONVOLUTED LOOM	38"	WRE-3000/LCN250

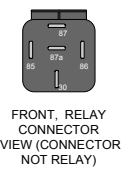
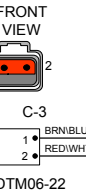
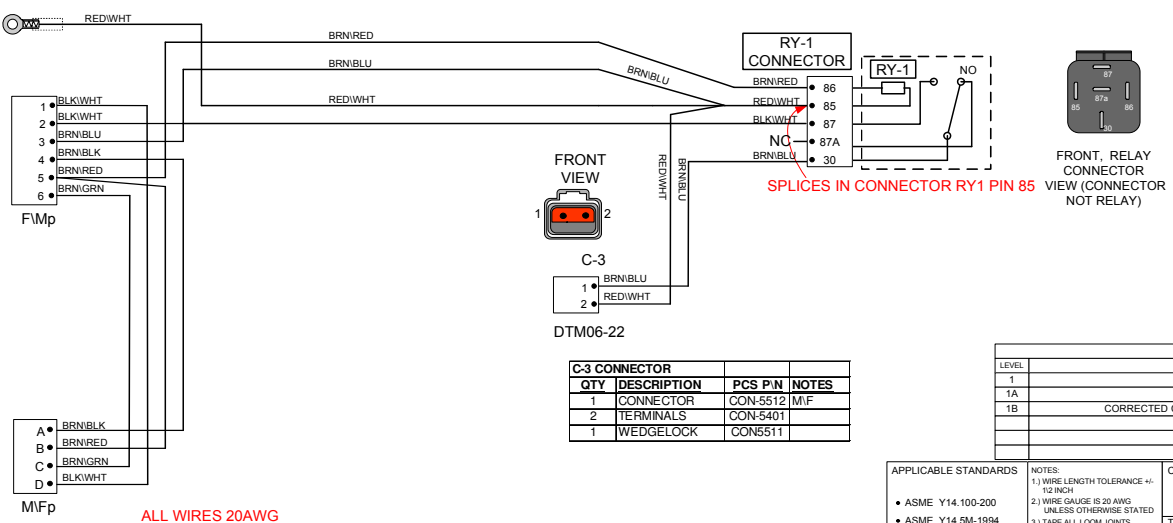
FUNNY RED WHITE WIRE			
PIN	CIRCUIT FUNCTION	COLOR	CONNECTS TO
	RING TERM	+12V SW	RED/WHT
			RY-1 85

C-1 CON-2205			
PIN	CIRCUIT FUNCTION	COLOR	CONNECTS TO
A		BRN/BLK	C2-1
B		BRN/RED	C2-5, RY1-86
C		BRN/GRN	C2-6
D		BLK/WHT	C2-1

C-2 CONNECTOR			
QTY	DESCRIPTION	PCS P/N	NOTES
1	CONNECTOR	CON-5518	F/M
6	TERMINALS	CON-5510	
1	WEDGE LOCK	CON-5519	
0	CAVITY PLUG	CON5210	



C-1 CONNECTOR			
QTY	DESCRIPTION	PCS P/N	NOTES
1	CONNECTOR	CON-2205	M/F
4	TERMINALS	CON-1020	
1	TPA	CON-2206	
1	SEAL	CON-1004	



C-3 CONNECTOR			
QTY	DESCRIPTION	PCS P/N	NOTES
1	CONNECTOR	CON-5512	M/F
2	TERMINALS	CON-5401	
1	WEDGELOCK	CON5511	

REVISION HISTORY			
LEVEL	DESCRIPTION	DATE	DRN APP
1	RELEASE	5/2/18	FD
1A	DRAWING UPDATE	10/18/18	FD
1B	CORRECTED C3- PINS 1 AND 2 WIRE COLOR ONLY.	1/12/18	FD

APPLICABLE STANDARDS

- ASME Y14.100-200
- ASME Y14.5M-1994
- IPC/WHMA-A-620A-CLASS 2
- MARK IAW MIL-STD-130.

NOTES

- WIRE LENGTH TOLERANCE +/- 1/2 INCH
- WIRE GAUGE IS 20 AWG UNLESS OTHERWISE STATED
- TAPE ALL LOOM JOINTS UNLESS OTHERWISE STATED
- TWIST INDICATED WIRES AT LEAST 10-12 TURNS PER FOOT
- PLACE TAGS NO MORE THAN 2" FROM CONNECTOR. PLACE TAGS FOR UNTERMINATED WIRES NO MORE THAN 2" FROM UNTERMINATED END.
- WIRE TYPE IS TXL UNLESS OTHERWISE STATED

COMPANY:
POWERTRAIN CONTROL SOLUTIONS

TITLE:
PB SHIFTER

SIZE: C
CUSTOMER DRAWING NO: XXXXX-XXXXX
PCS PART NUMBER: TRN-8912
DATE: 10/4/2017
DATE: 1/22/2019
DRAWN BY: FRED D.
REV: 001
SHEET 2 OF 4

FULL FILENAME
I:\PCS\STORAGE\OLD\Z\CUSTOMERS-RESOURCES\DELTA\TRN-8912-001 DELTA POWER PB SHIFTER [DELTA]\TRN-8912-001 PB SHIFTER_VSD

[DELTA]
Print Date
1/22/2019
1700