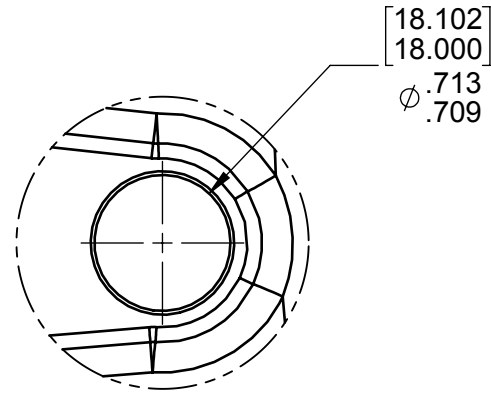
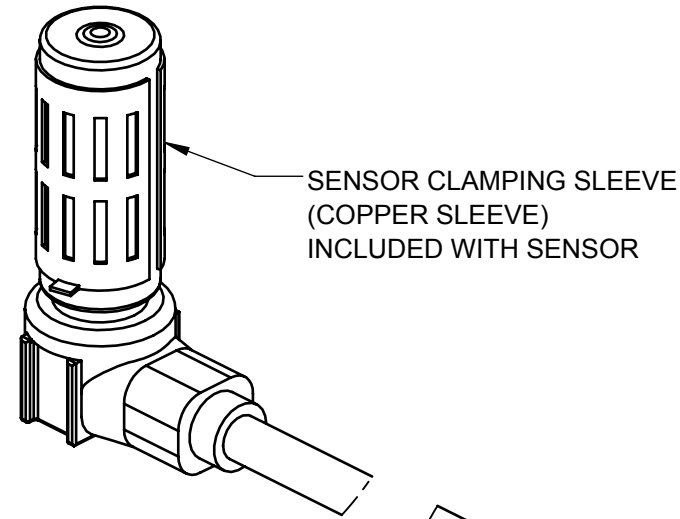


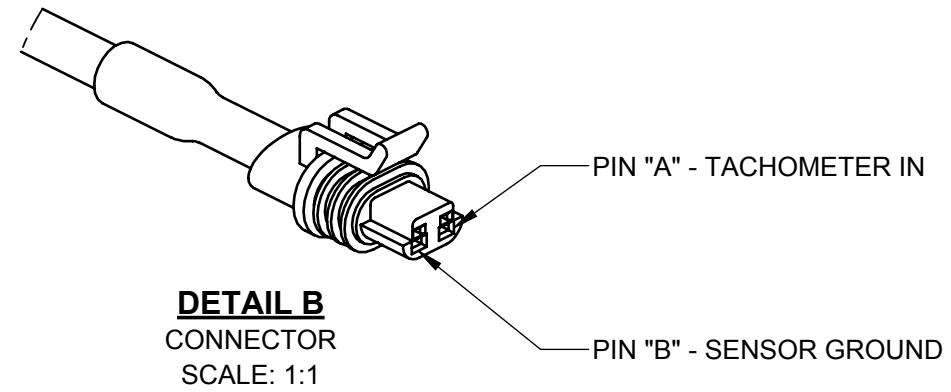
BOM #	DESCRIPTION	PCS PART #	QTY
1	RPM SENSOR - ENGINE OUTPUT	SNS1025	1



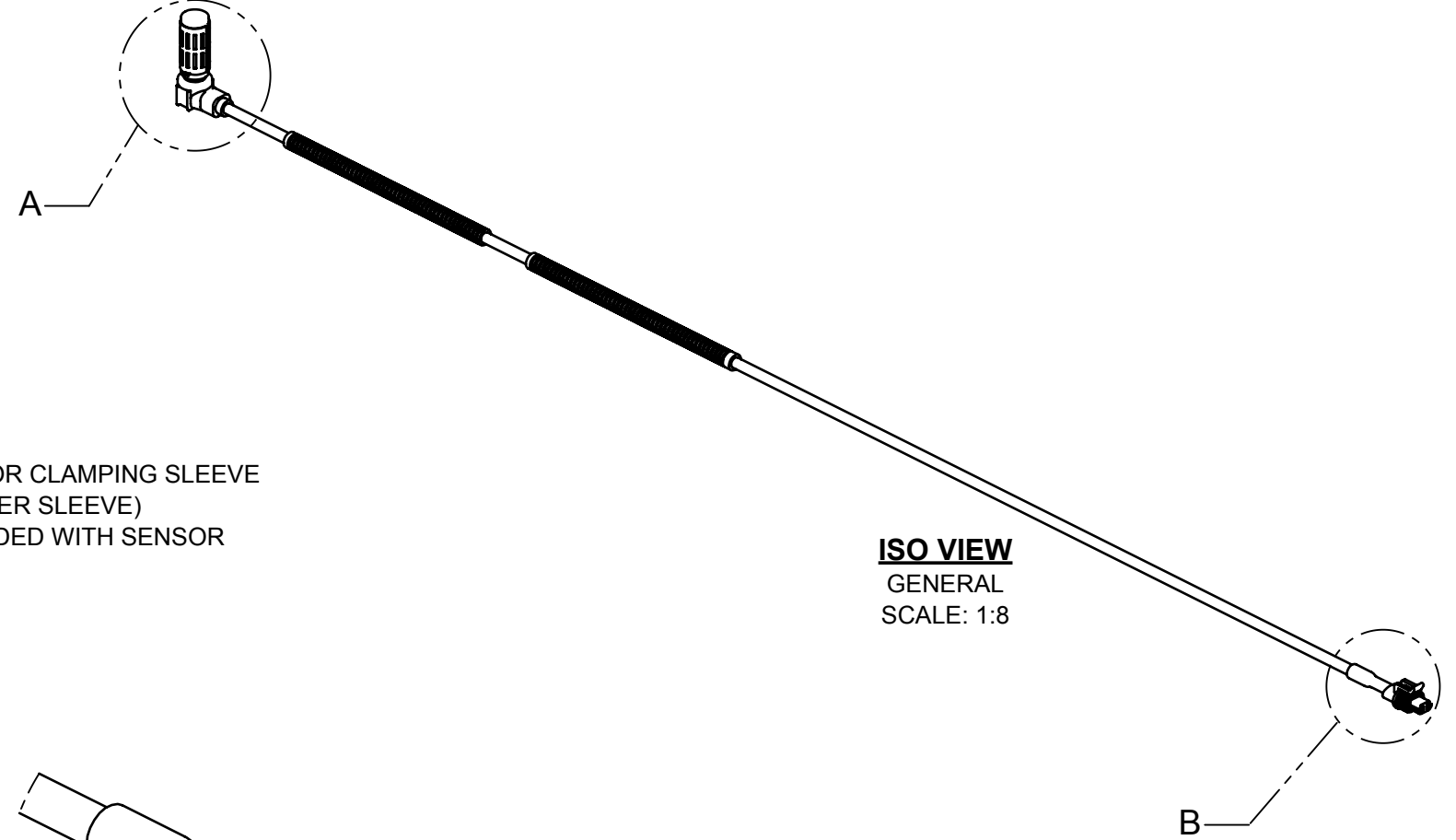
TOP VIEW
EXAMPLE BORE
SCALE: 1:1



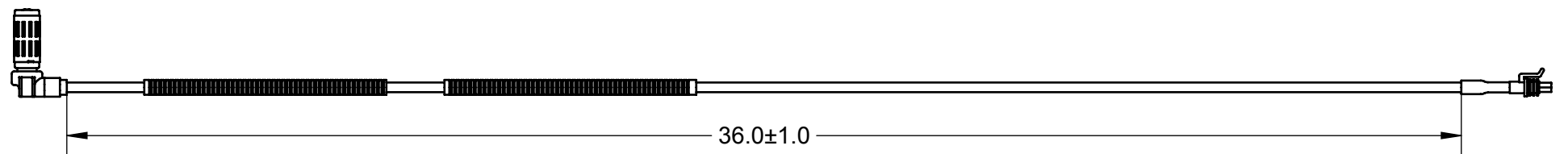
DETAIL A
SENSOR AND SLEEVE
SCALE: 1:1



DETAIL B
CONNECTOR
SCALE: 1:1



ISO VIEW
GENERAL
SCALE: 1:8



SIDE VIEW
CABLE LENGTH
SCALE: 1:4

NOTES:

- INTERPRET THIS PART IN ACCORDANCE WITH ASME Y14.5-2009.
- THE TWO WIRES ("A" AND "B" SHOWN IN **DETAIL B**) BETWEEN THIS SENSOR AND THE ELECTRONIC CONTROLLER ARE TO BE A TWISTED PAIR.
- THE PACKAGE INCLUDES (1X) SENSOR, (1X) COPPER SLEEVE, AND (1X) INSTALLATION INSTRUCTIONS.
- READ AND ADHERE TO ALL OEM INSTALLATION NOTES INCLUDED IN THE PACKAGING BEFORE INSTALLATION AND USE. FULLY INSERT THE COPPER SLEEVE INCLUDED, THEN THE SENSOR. THE SENSOR MUST BE PUSHED FULLY AGAINST ANY TONE WHEEL DURING INSTALLATION, THE SENSOR WILL SELF-ADJUST FOR THE CORRECT GAP.
- THE SENSOR AND HARNESS ARE TO BE INSTALLED IN SUCH A MANNER THAT DOES NOT ALLOW DIRECT EXPOSURE TO HEAT SOURCES, DOES NOT ALLOW THEM TO KINK, AND DOES NOT ALLOW ANY RUBBING ON SHARP EDGES.
- ANY VARIATIONS TO THE TONE WHEEL ASSEMBLY ARE TO BE APPROVED BY PCS ENGINEERING.

PROPRIETARY AND CONFIDENTIAL
THE INFORMATION CONTAINED IN THIS DRAWING IS THE SOLE PROPERTY OF PCS. ANY REPRODUCTION IN PART OR AS A WHOLE WITHOUT THE WRITTEN PERMISSION OF PCS IS PROHIBITED.

DIMENSIONS ARE IN INCHES	DRAWN BY ENG APPR.	MFP 3/16/2017 SCALE: 1:2 SHEET 1 OF 1
--------------------------	-----------------------	--



DESCRIPTION		
RPM SENSOR - ENGINE OUTPUT		
SIZE	DRAWING NO.	REV
B	SNS1025	1

USED ON	NEXT ASSEMBLY