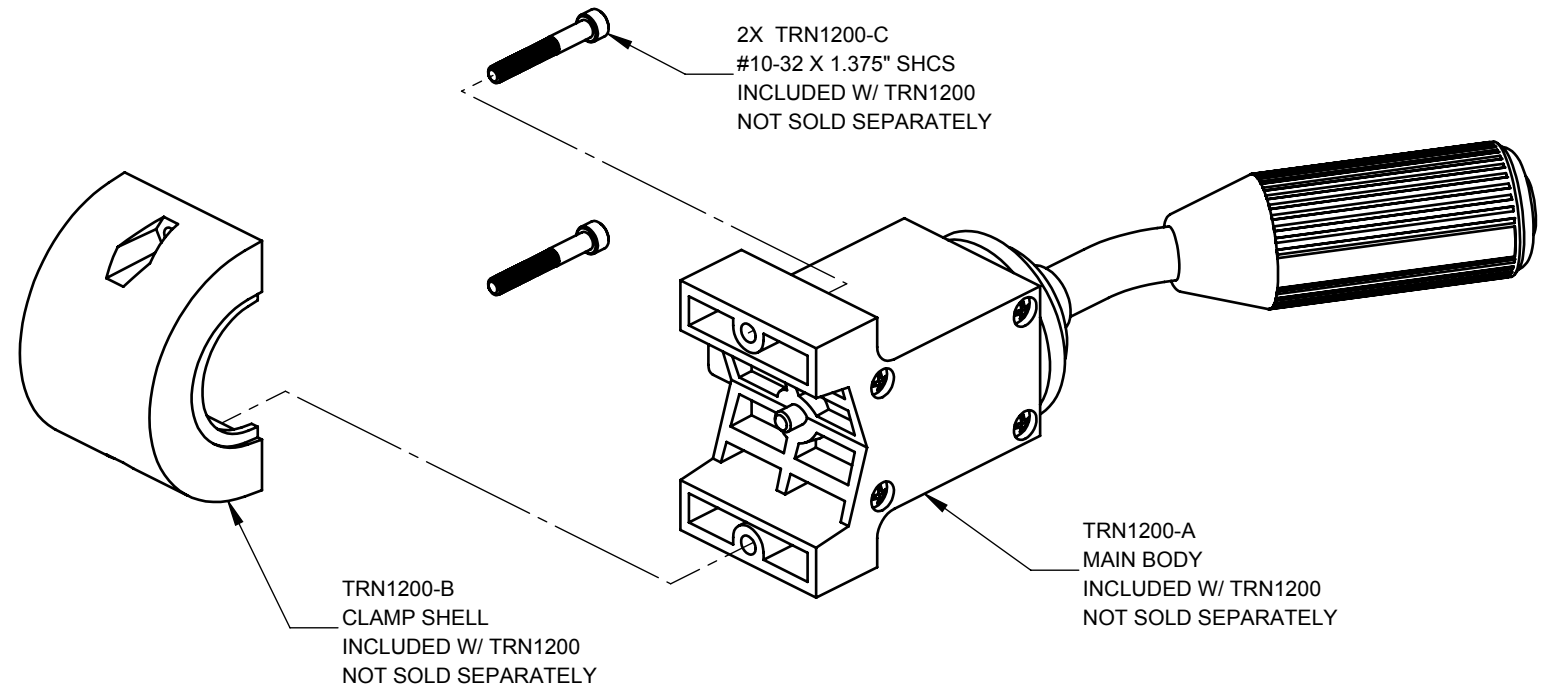


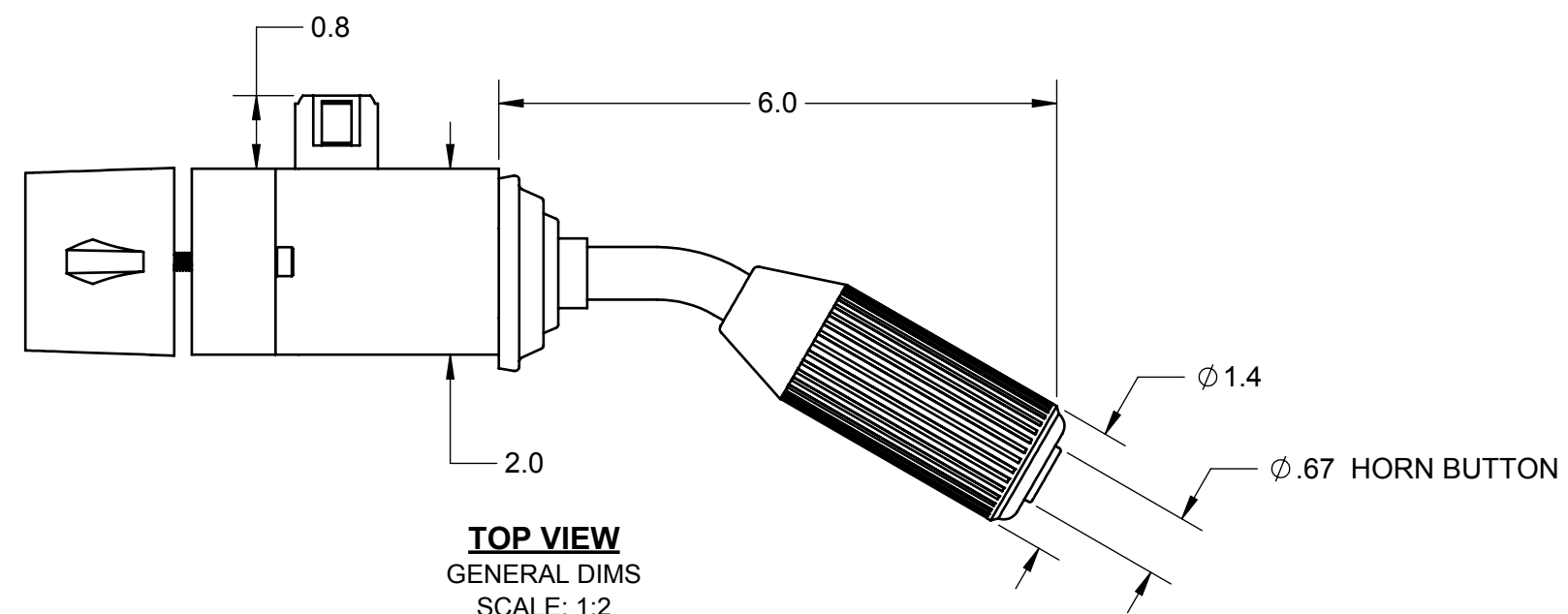
**BACK VIEW**  
GENERAL DIMS  
SCALE: 1:2



TRN1200-B  
CLAMP SHELL  
INCLUDED W/ TRN1200  
NOT SOLD SEPARATELY

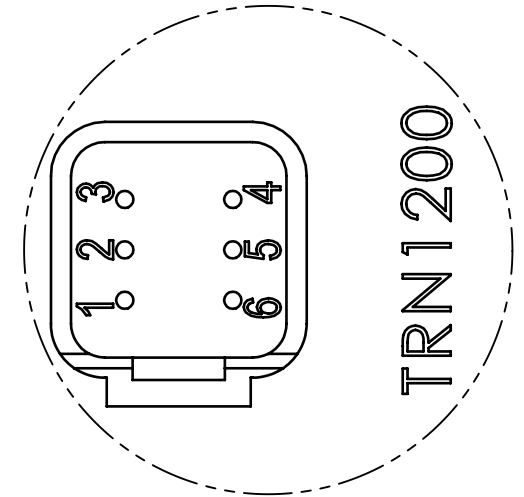
2X TRN1200-C  
#10-32 X 1.375" SHCS  
INCLUDED W/ TRN1200  
NOT SOLD SEPARATELY

TRN1200-A  
MAIN BODY  
INCLUDED W/ TRN1200  
NOT SOLD SEPARATELY

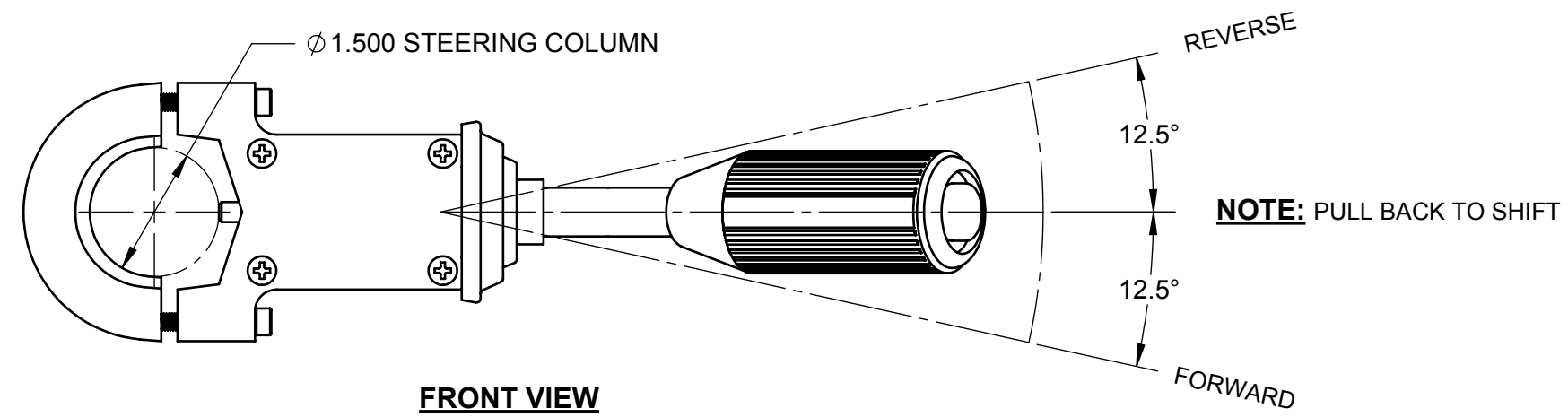


**TOP VIEW**  
GENERAL DIMS  
SCALE: 1:2

| MOLDED DEUTSCH DT04-6P PINOUT |                     |
|-------------------------------|---------------------|
| PIN                           | DESCRIPTION         |
| 1                             | F-N-R SIGNAL GROUND |
| 2                             | HORN SIGNAL GROUND  |
| 3                             | HORN (OPTIONAL)     |
| 4                             | REVERSE SIGNAL      |
| 5                             | NEUTRAL SAFETY      |
| 6                             | FORWARD SIGNAL      |

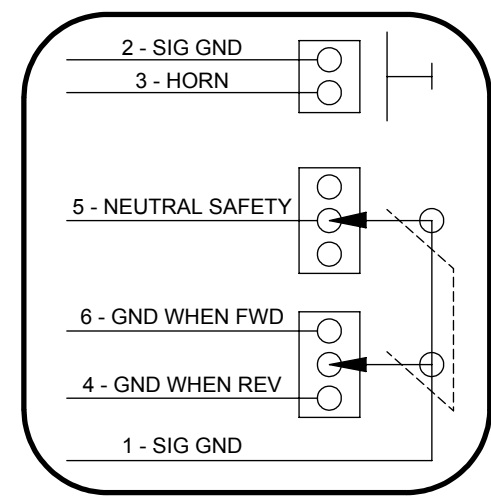


**DETAIL A**  
CONNECTOR PINOUT  
SCALE: 3:2



**FRONT VIEW**  
SHIFTING AND COLUMN  
SCALE: 1:2

**NOTE:** PULL BACK TO SHIFT



**PCS** Powertrain Control Solutions  
Engineering the future of driveline control

DESCRIPTION  
**FORWARD-NEUTRAL-REVERSE  
ELECTRONIC SHIFTER**

**PROPRIETARY AND CONFIDENTIAL**  
THE INFORMATION CONTAINED IN THIS DRAWING IS THE SOLE PROPERTY OF PCS. ANY  
REPRODUCTION IN PART OR AS A WHOLE WITHOUT THE WRITTEN PERMISSION OF PCS IS PROHIBITED.

DRAWN BY: MFP  
ENG APPR.:  
DIMENSIONS ARE IN INCHES  
SCALE: 1:2  
SHEET 1 OF 1

|                  |                               |
|------------------|-------------------------------|
| USED ON          | NEXT ASSEMBLY                 |
|                  |                               |
| SIZE<br><b>B</b> | DRAWING NO.<br><b>TRN1200</b> |
| REV<br><b>1</b>  |                               |